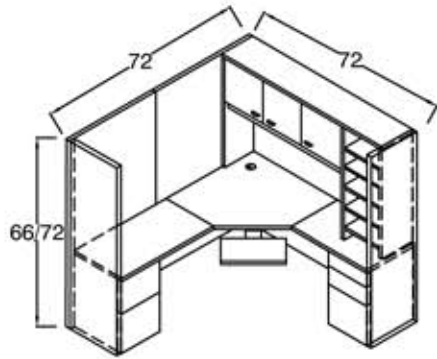


6' X 6' WORKSTATION

ALL WOOD OFFICE SYSTEMS 2008 LIST PRICER



SAMPLE WORKSTATION AS SHOWN:

- 1 CORNER UNIT
- 1 30" TOP
- 1 27 1/2 RETURN TOP
- 1 FILE/FILE PED
- 1 BOX/BOX FILE PED
- 1 HUTCH
- 1 VERTICAL ORGANIZER
- 1 CORNER MODESTY
- 1 RETURN MODESTY
- 1 30" PANELS
- 1 42" PANELS
- 2 24" PANELS
- 1 ELECTRICAL
- 1 POWER GROMMET
- 1 AKB
- TOTAL \$8,706 LIST**



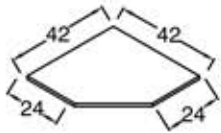
ALUMINUM FRAME WINDOW, GLASS, \$691



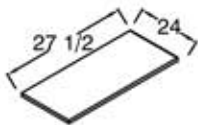
GLASS SHELVES, \$223



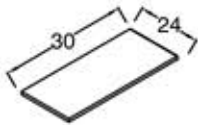
INDIVIDUAL WORKSTATION ELECTRICAL SYSTEM, \$617



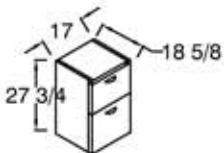
CORNER TOP, \$965



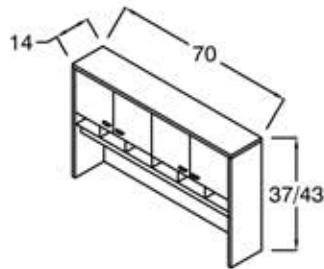
RIGHT RETURN TOP, \$187



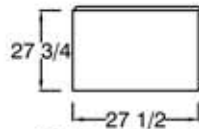
LEFT RETURN TOP, \$187



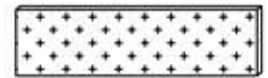
FILE/FILE PEDESTAL, \$888



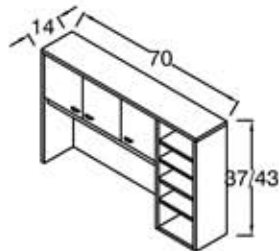
HUTCH, \$1,560
HORIZONTAL ORGANIZERS, \$370



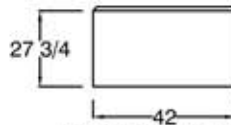
CORNER MODESTY PANEL, \$220



HUTCH TACKBOARD, \$165



HUTCH, \$1,560
VERTICAL ORGANIZERS, \$621



RIGHT RETURN MODESTY PANEL, \$230



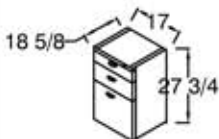
ARTICULATING KEYBOARD, \$398



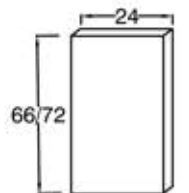
POWER GROMMET, \$389
2 ELECTRICAL OUTLETS
2 UNIVERSAL (DATA/VOICE)



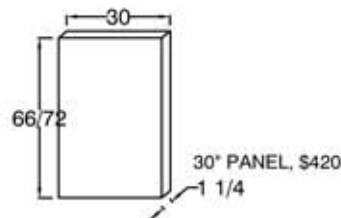
STANDARD GROMMET, \$29



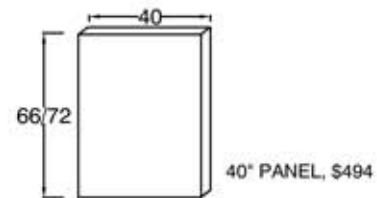
BOX/BOX/FILE PEDESTAL, \$921



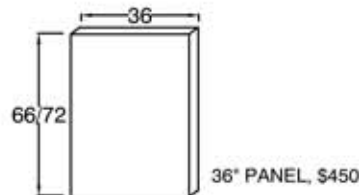
24" PANEL, \$280



30" PANEL, \$420



40" PANEL, \$494



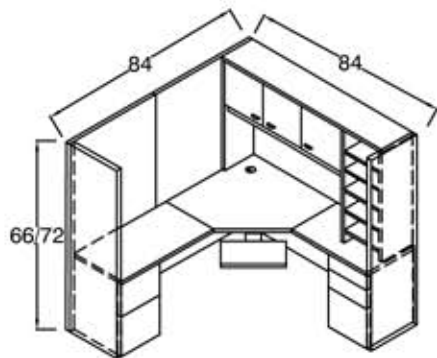
36" PANEL, \$450



42" PANEL, \$543

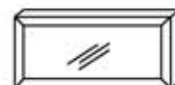
7' X 7' WORKSTATION

ALL WOOD OFFICE SYSTEMS 2008 LIST PRICER



SAMPLE WORKSTATION AS SHOWN:

- 1 CORNER UNIT
- 1 39 1/2" TOP
- 1 40 3/4" RETURN TOP
- 1 FILE/FILE PED
- 1 BOX/BOX FILE PED
- 1 HUTCH
- 1 VERTICAL ORGANIZER
- 1 CORNER MODESTY
- 1 RETURN MODESTY
- 2 30" PANELS
- 3 24" PANELS
- 1 ELECTRICAL
- 1 POWER GROMMET
- 1 AKB
- TOTAL \$8,863 LIST



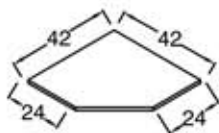
ALUMINUM FRAME WINDOW, GLASS, \$691



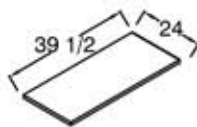
GLASS SHELVES, \$223



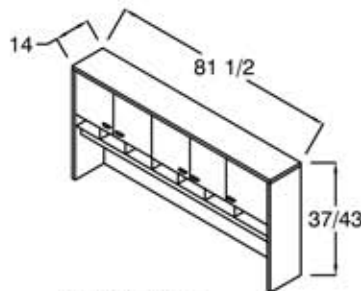
INDIVIDUAL WORKSTATION ELECTRICAL SYSTEM, \$617



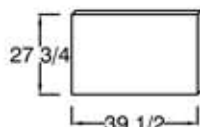
CORNER TOP, \$965



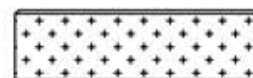
RIGHT RETURN TOP, \$187



HUTCH, \$1,794
HORIZONTAL ORGANIZERS, \$390



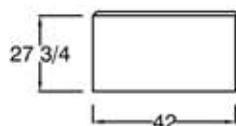
CORNER MODESTY PANEL, \$220



HUTCH TACKBOARD, \$165



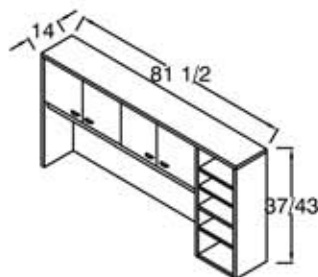
LEFT RETURN TOP, \$187



RIGHT RETURN MODESTY PANEL, \$230



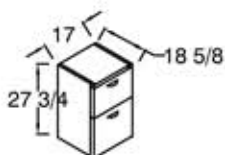
ARTICULATING KEYBOARD, \$398



HUTCH, \$1,560
VERTICAL ORGANIZERS, \$621



POWER GROMMET, \$389
2 ELECTRICAL OUTLETS
2 UNIVERSAL (DATA/VOICE)



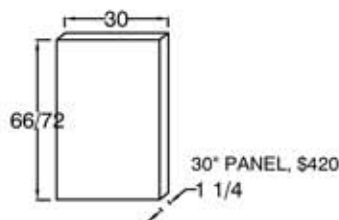
FILE/FILE PEDESTAL, \$888



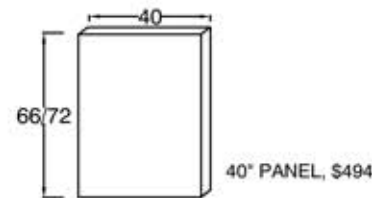
STANDARD GROMMET, \$29



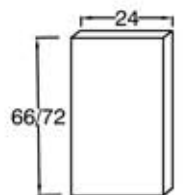
BOX/BOX/FILE PEDESTAL, \$921



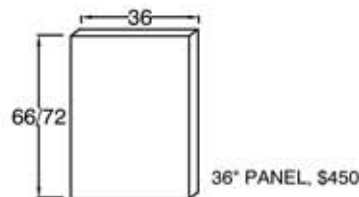
30" PANEL, \$420



40" PANEL, \$494



24" PANEL, \$280



36" PANEL, \$450



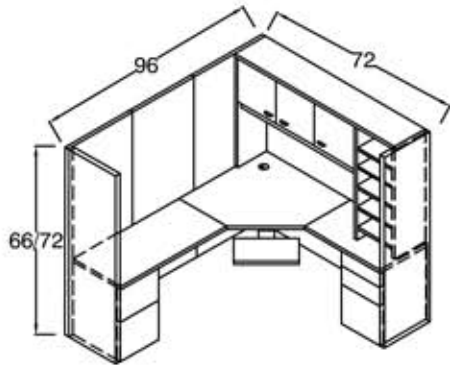
42" PANEL, \$543



LATERAL FILE PEDESTAL, \$979

8' X 6' WORKSTATION

ALL WOOD OFFICE SYSTEMS 2008 LIST PRICER



SAMPLE WORKSTATION AS SHOWN:

- 1 CORNER UNIT
- 1 48" TOP
- 1 27 1/2" RETURN TOP
- 1 FILE/FILE PED
- 1 BOX/BOX FILE PED
- 1 HUTCH
- 1 VERTICAL ORGANIZER
- 1 CORNER MODESTY
- 1 RETURN MODESTY
- 2 30" PANELS
- 1 30" PANEL
- 2 24" PANELS
- 1 ELECTRICAL
- 1 POWER GROMMET
- 1 AKB
- TOTAL \$9,033 LIST**



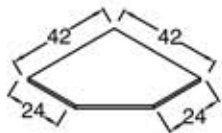
ALUMINUM FRAME WINDOW, GLASS, \$691



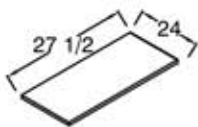
GLASS SHELVES, \$223



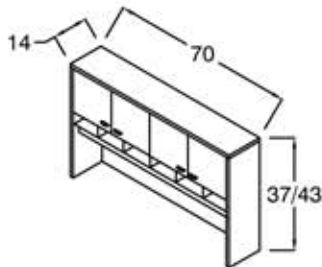
INDIVIDUAL WORKSTATION ELECTRICAL SYSTEM, \$617



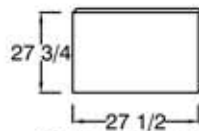
CORNER TOP, \$965



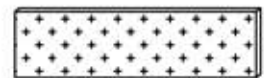
RIGHT RETURN TOP, \$187



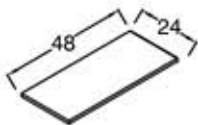
HUTCH, \$1,560
HORIZONTAL ORGANIZERS, \$370



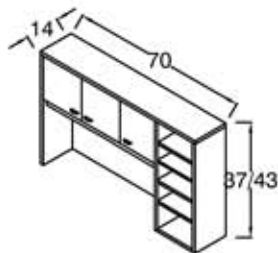
CORNER MODESTY PANEL, \$220



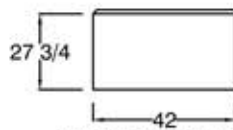
HUTCH TACKBOARD, \$165



LEFT RETURN TOP, \$272



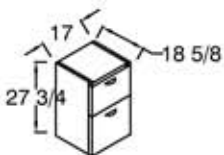
HUTCH, \$1,560
VERTICAL ORGANIZERS, \$621



RIGHT RETURN MODESTY PANEL, \$230



ARTICULATING KEYBOARD, \$398



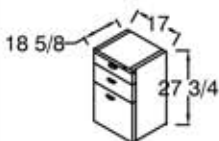
FILE/FILE PEDESTAL, \$888



POWER GROMMET, \$389
2 ELECTRICAL OUTLETS
2 UNIVERSAL (DATA/VOICE)



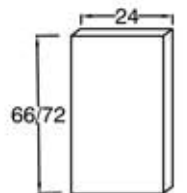
STANDARD GROMMET, \$29



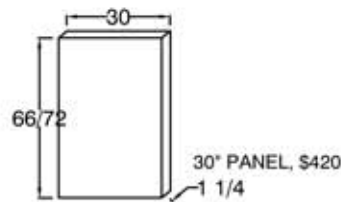
BOX/BOX/FILE PEDESTAL, \$921



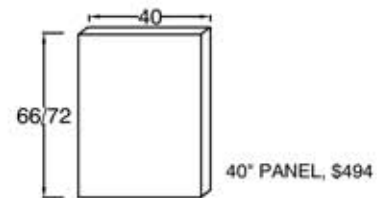
LATERAL FILE PEDESTAL, \$979



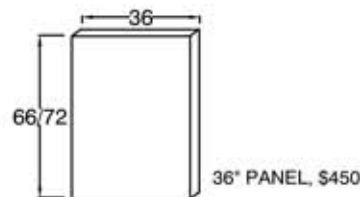
24" PANEL, \$280



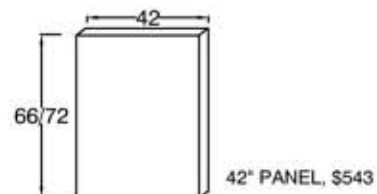
30" PANEL, \$420



40" PANEL, \$494



36" PANEL, \$450



42" PANEL, \$543